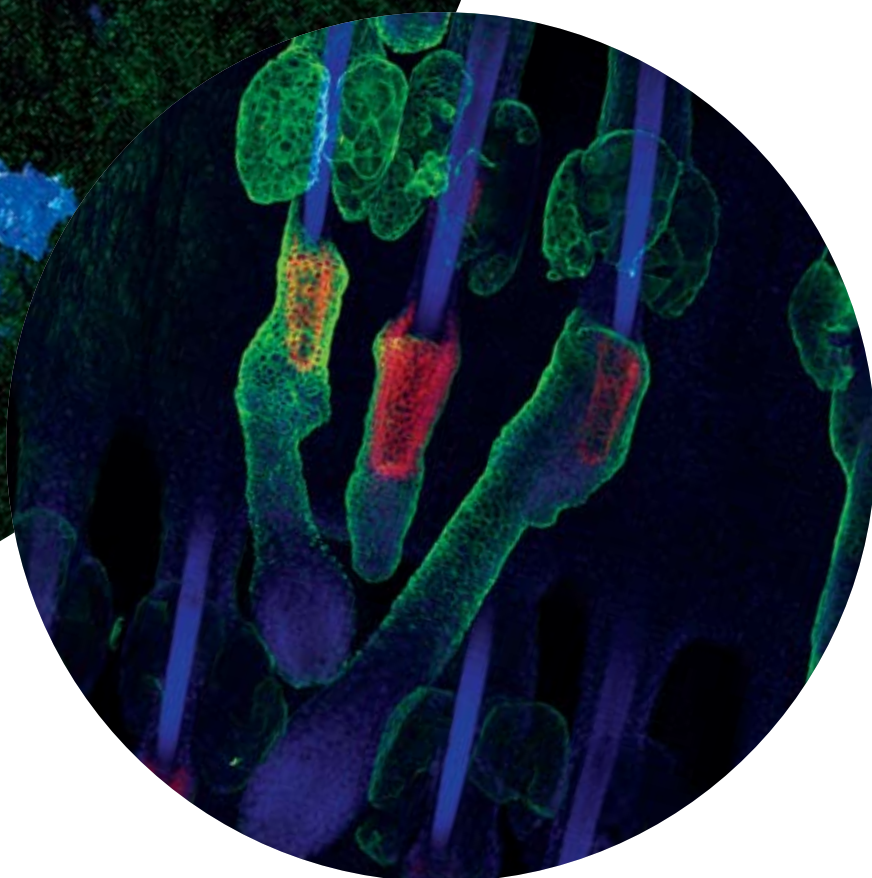




Cambridge  
Research  
Institute

Scientific  
Report  
2008



*Together we will beat cancer*

CANCER RESEARCH UK



## Cover images

Main image provided by Adam Giangreco. Picture represents an entire lung visualised using a novel wholemount confocal microscopy technique developed at the CRI in order to assess whether airway stem cells contribute to lung homeostasis. This new technique will allow us to determine whether stem cells repair lungs after injury and also if these cells act as the cells-of-origin for lung cancer. The chimeric lung pictured here was immunostained with markers to detect airway Clara cell secretory protein (blue), calcitonin gene related peptide (red), and GFP-expressing cell populations (green).

Contributors:

Adam Giangreco – concept, image, technique

Esther Arwert, Ian Rosewell, Fiona Watt – chimeric mouse model

Virgilio Failla, Stefanie Reichelt – image acquisition and analysis

Front cover image provided by Chris Baker:

Back cover image provided by Virgilio Failla and Jian Xian.

Cancer Research UK Cambridge Research Institute Scientific Report 2008

Editor: Laura Blackburn

Page setting and photography: Charles D N Thomson

ISSN 1756-8994

Copyright 2008 © Cancer Research UK